



HYDRAULIC GRAPPLE



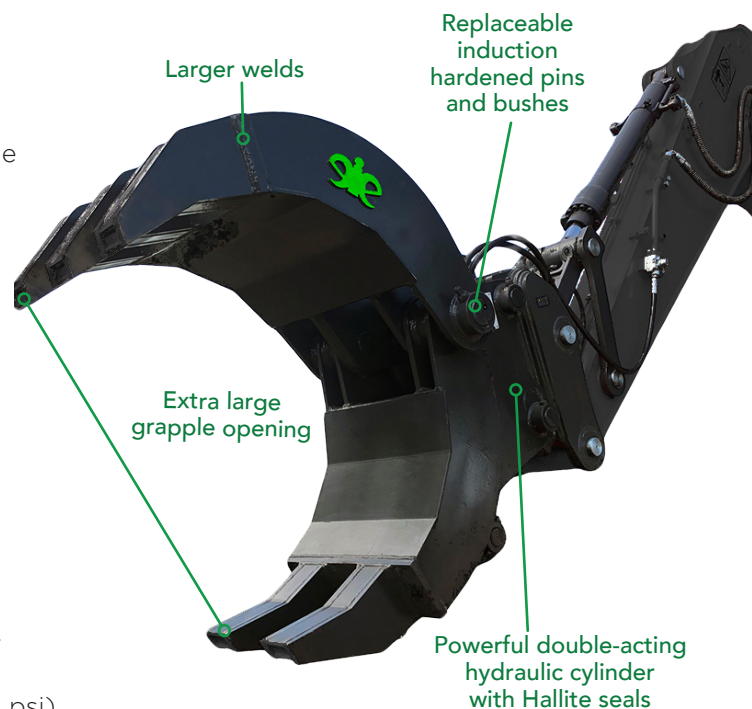
eiengineering's Hydraulic Grapple generates awesome power with its five interlocking heavy duty fingers.

The heavy duty Hydraulic Grapple is a versatile attachment suitable for many applications including moving around bulk materials, clean-up, trees, rock placement, waste or carrying out demolition. With one of the largest grapple openings in the industry, the eiengineering hydraulic grapple is designed to grab long, awkward & bulky objects for greater productivity.

For greater versatility, the grapple can be picked up in reverse with either 3 or 2 fingers facing the cabin. Two fingers facing the operator allows for better visibility when picking rocks or rubbish, or three fingers facing the operator provides a much safer option when working in demolition or other hazardous environments.

Our Hydraulic Grapples are built with a large, heavy duty double-acting hydraulic cylinder, mounted under the quick hitch. This allows for the large opening capability, reversible pick-up and also provides optimum protection of the cylinder. The high rated Hallite seals ensure our hydraulic cylinder is capable of operating at pressures in excess of 350 Bar (5,000 psi). Like our other attachments, the Hydraulic Grapple is constructed from eie80[®] grade high strength steel to withstand continuous use under harsh Australian conditions. Available for sale or hire.

*eie80 grade high strength steel has a material hardness of 250 – 280 Brinell. It's 3 x stronger and 3 x more abrasion resistant than mild steel 250 grade.



SPECS:

Included: Pins, Hoses, Couplers (up to 8T)
Optional: Serrated & HD Finger Wear Pads
Machine: 1 tonne to 38 tonne





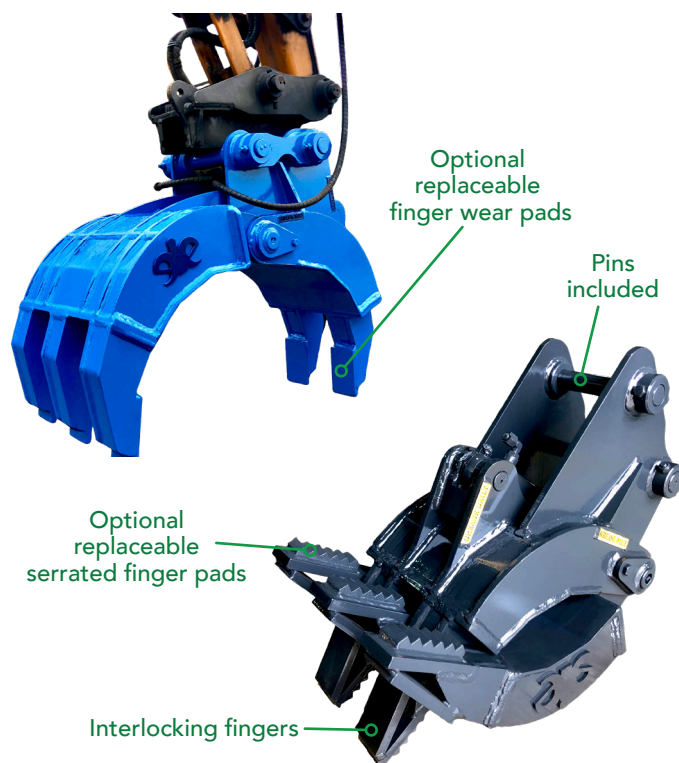
HYDRAULIC GRAPPLE

MACHINE SIZE	WEIGHT KG	OPENING MM	WIDTH MM
1 - 2.5 Tonne	115	688	385
2.6 - 3.9 Tonne	120	750	385
4 - 5.9 Tonne	275	920	510
6 - 9.9 Tonne	470	1200	640
10 - 17.9 Tonne	780	1490	700
18 - 30 Tonne	1350	1800	914

Material:

- eie80 Skeleton
- eie80 Skin
- Bisalloy 400 Finger Wear Pads

Cylinder 5000psi working pressure, Hallite seals with Sun counterbalance valve block for smooth operation & safety.



FEATURE	ADVANTAGE	BENEFIT
Heavy Duty Double-acting Hydraulic Cylinder	Large grapple opening capacity	Easier to pick-up large & bulky items. Pick-up more bulk loads per cycle
	Allows reverse pick-up of grapple either 2 fingers facing cab or 3 fingers facing cab	Easier to use for small jobs, safer to use in demolition & other hazardous environments
	Cylinder mounted under the quick coupler	Safer position means less likelihood of damage to cylinder or rod
	Hallite hydraulic seals rated to 350 Bar, 5,000psi.	Less maintenance, no cylinder "creep"
Replaceable Serrated and Heavy Duty Finger Wear Pads	Weld-on finger wear pads for greater wear resistance and easier pick up of awkward materials	Protects the grapple structure. Easier replacement reduces maintenance costs. Easier pick-up of awkward materials
Five Finger Construction	Easier and safer handling of awkward materials	More flexibility and versatility Greater productivity
Hardened Bushes	Longer bush life	Less maintenance and replacement costs
Larger welds	More robust – longer grapple life	Less maintenance and replacement costs

*eie80 grade high strength steel has a material hardness of 250 – 280 Brinell. It's 3 x stronger and 3 x more abrasion resistant than mild steel 250 grade.

See our earthmoving attachments in action:



eiengineering
high performance attachments